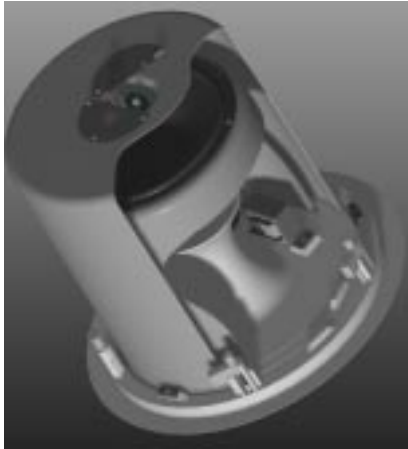


# JBL's Control 19 In-Ceiling Subwoofer Brings Full Fidelity to Commercial Installations



*Cutaway drawing shows the technology hidden inside the JBL Control 19 in-ceiling subwoofer, including Linear Dynamics™ exit port and Nested Chamber™ design.*

Most sound contractors and business music providers today are well aware of the shift in market demand toward higher fidelity in commercial sound systems. An increasing number of restaurants and retail venues require the sound in their location to be at par with what their customers hear at home, in their cars and in movie theaters. The venue owners have become aware that the excitement generated by audio fidelity reflects positively on the ambiance of their business in the minds of their customers.

One significant challenge for sound system designers and installers has been the unavailability of visually inconspicuous subwoofers capable of producing powerful bass excitement.

These are the reasons JBL Professional developed the Control 19 in-ceiling subwoofer. JBL incorporates technology from their years of concert touring experience to build a premium performance subwoofer into a package measuring only 12 inches (304 mm) wide and 12 inches (304 mm) deep that installs into a standard drop ceiling.

**The Technology** -- The unique Nested Chamber™ design wraps one chamber around the other to deliver high output from the surprisingly compact enclosure. A Linear Dynamics™ exit port, originally developed for JBL's concert speaker systems, produces extended deep bass output. The natural acoustic low-pass character of this design makes it easy to augment a full-range sound system without the expense of an external crossover or separate amp channel.

The Control 19 is designed to ensure reliability through the inclusion of JBL's exclusive SonicGuard™ overload protection circuitry. An optional version of the Control 19 adds a high quality transformer designed specifically for producing full-level bass from a 70 volt or 100 volt distributed speaker line without saturating or distorting.

All of the speakers in the Control Contractor ceiling speaker line come with built-in metal backcans and safety agency approvals for use in air plenum applications. In addition to the integral backcan, the speaker comes packaged with the front grille and mounting accessories, ensuring that everything arrives at the job site together.

Installation is quick and easy. Inputs are attached by using an included connector that can be pre-wired before installing the speaker for fast snap-on installation. Speakers slide easily into place as a complete assembly, reducing installation time.

The Control 19 answers the challenge of providing high quality, yet visually inconspicuous bass in business applications. The Control 19 is part of JBL's popular Control Contractor family of in-ceiling and surface-mount speakers.