

Professional Series

Key Features:

- ▶ Usable Response to 35 Hz
- ▶ 97 dB Sensitivity, 1 W, 1 m
- ▶ 600 Watts Power Capacity
- ▶ Direct Radiator Ported Enclosure



The JBL 4647A low frequency system is designed for general sound reinforcement, smaller motion picture theaters, and as an individual module in cluster design. Power response is smooth, and axial response extends to 1200 Hz.

The system uses the 2226H 380 mm (15 in) patented Vented Gap Cooling™ transducer for high power handling and reduced power compression. The transducer features a 100 mm (4 in) voice coil operating in a large symmetrical field geometry (SFG) magnet structure to reduce a second harmonic distortion to inconsequential levels.

The enclosure is constructed of dense stock and is extensively braced on all panels. Net internal volume is 145 l (5 cu ft), and the enclosure is tuned to 40 Hz. Port area is large, ensuring minimum turbulence at full power input at low frequencies.

Specifications:

COMPONENTS:		1-JBL 4507 low frequency enclosure 1-JBL 2226H low frequency transducer (Note: Components may be ordered separately for field assembly.)
SYSTEM SPECIFICATIONS:		
Rated impedance: 8 ohms		
Minimum impedance: 7.3 ohms		
Input power rating: 600 watts, continuous pink noise		
Axial sensitivity: 97 dB, 1 W, 1 m		
Half-space reference efficiency: 3.5%		
Maximum continuous acoustical power output (sine wave input): 7 watts		
Maximum continuous SPL (sine wave input):		
Half-space at 1 m (3.3 ft): 120 dB		
Half-space at 3 m (10 ft): 110 dB		
Half-space at 30 m (100 ft): 90 dB		
Recommended crossover frequencies:		
High-pass: 40 Hz, 12-dB/octave		
Low-pass: 500, 800, or 1200 Hz, 12- or 18-dB/octave		
System polarity: Positive voltage to black terminal produces forward cone motion		
Input connectors: Color coded push terminals		
Net system weight: 37.7 kg (83 lb)		
Shipping weight: 41.3 kg (91 lb)		
ENCLOSURE SPECIFICATIONS:		
Materials and finish: 19 mm (¾ inch) particle board with 25 mm (1 inch) baffle; matte black finish		
Enclosure volume: 145 l (5 cu ft)		
Vent tuning frequency: 40 Hz		
Dimensions:		
H x W x D 775 mm x 546 mm x 448 mm (30½ in x 21½ in x 17⅝ in)		
Net weight: 28.6 kg (63 lb)		
Shipping weight: 32.7 kg (72 lb)		

¹AES pink noise

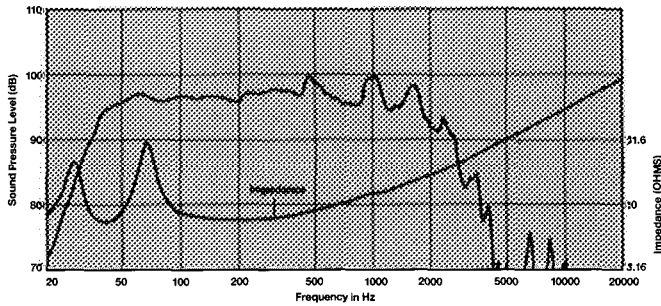
JBL continually engages in research related to product improvement, New materials, production methods, and design refinements are introduced into existing products without notice as a routine expression of that philosophy. For this reason, any current JBL product may differ in some respect from its published description, but will always equal or exceed the original design specifications unless otherwise stated

▶ 4647A Low Frequency System

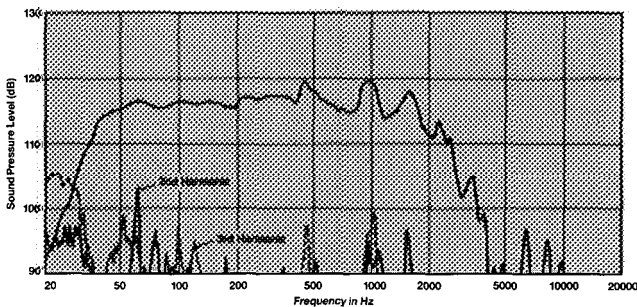
Architectural Specifications:

The low frequency system shall consist of one 380 mm (15 in) diameter transducer mounted in a direct radiator ported enclosure. The transducer shall be capable of 10 mm (0.4 in) linear excursion ($2X_{max}$) and shall be designed to produce a symmetrical magnetic field in the voice coil gap. In addition, a flux stabilizing ring encircling the pole piece shall act to reduce flux modulation. The transducer frame shall be of cast aluminum to resist deformation, and the voice coil shall be wound of copper ribbon 100 mm (4 in) in diameter. The enclosure shall be 145l(5 cu ft) net internal volume, tuned to 40 Hz, and constructed of dense stock extensively braced.

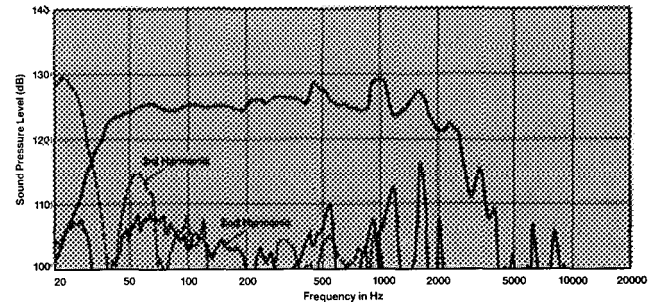
Performance specifications of a typical production unit shall be as follows: Under hemispherical free-field conditions, measured sensitivity (SPL at 1 m (3.3 ft) with 1 W swept input, 100-500 Hz) shall be at least 97 dB. The half-space reference efficiency shall be 3.5%. Usable low frequency response shall extend from 35 Hz (-10 dB) and be flat at 45 Hz (-3 dB). Nominal impedance shall be 8 ohms. Rated power capacity shall be at least 600 watts, normal program material. The system shall be the JBL Model 4647A. Other loudspeaker systems will be considered as equivalent provided that submitted data from a recognized independent test laboratory verify that the above performance specifications are met.



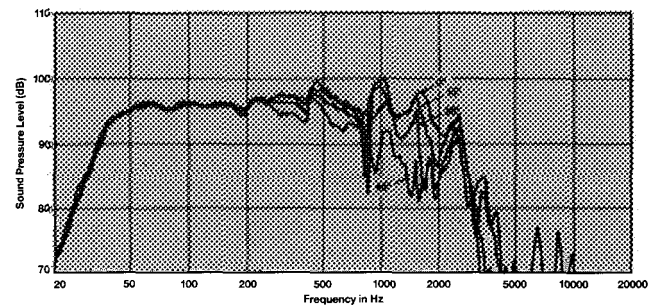
4647A system half-space (2π) response, one watt at one meter on-axis; impedance.



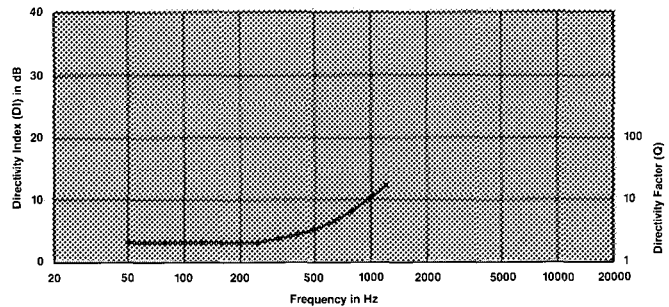
4647A system half-space (2π) response, 10 watts at one meter on-axis; distortion raised 20 dB.



4647A system half-space (2π) response, 100 watts at one meter on-axis; distortion raised 20 dB.



4647A system off-axis response (0,15,30 and 45 degrees); one watt at one meter.



Directivity Index (DI) and Directivity Factor (Q), on-axis, half-space (2π).



JBL Professional
8500 Balboa Boulevard, P.O. Box 2200
Northridge, California 91329 U.S.A.

▶ A Harman International Company

SS 4647A
CRP 5M
10196