



JBL Professional  
8500 Balboa Blvd.  
Northridge, CA 91329  
Phone: 818-894-8850  
Fax: 818-830-7802  
www.jblpro.com

## NEWS RELEASE

### FOR IMMEDIATE RELEASE

For more information contact:

Phil Moon Phone: 818-830-8711

email: pmoon@harman.com

Staci Moore Phone: 818-895-3495

email: smoore@harman.com

For text file go to the JBL Press Room at: <http://jblpro.com/pressroom>

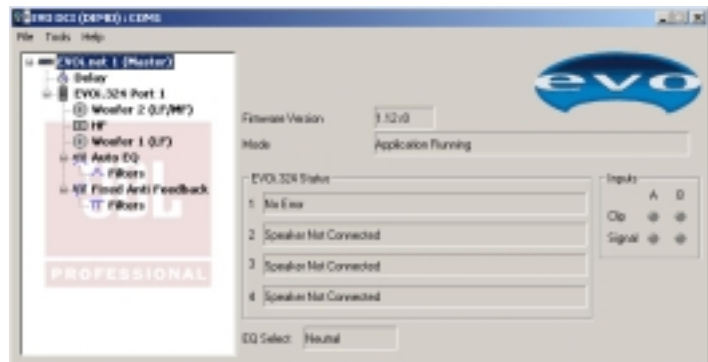
---

### EVO DCI SOFTWARE PROVIDES COMPUTER CONTROL FOR EVO INTELLIGENT LOUDSPEAKERS

NORTHRIDGE, CA - NOVEMBER 30, 2001 — EVO, the intelligent loudspeaker system from JBL Professional, is now being installed in schools, houses of worship and small performance venues throughout the world. Automated set up and operation, anti-feedback control and excellent sound quality are just some of the features that are appealing for these customers. Now, with JBL's new Freeware computer program, EVO DCI (Digital Control Interface), the internal power of EVO can be accessed, edited and stored via Windows-based computers. The computer is simply plugged into the RS232 port on the front panel of the EVOi.net, which is the communications hub of an EVO system for up to four EVO Loudspeakers.

EVO DCI v1.0 is an easy-to-use software application that allows users to monitor and control EVOi.324 loudspeakers. The results and performance of many functions can be viewed, adjusted and stored for later use. This software program is intended for EVO installers who wish to use EVO in applications that fall outside the standard EVO applications or where fine tuning may provide optimum results.

“There is so much going on inside of EVO, that there is a natural tendency for audio professionals to want to access the control capabilities in order to fine tune, manually set parameters and save their settings,” stated Simon Jones, JBL Marketing Director responsible for EVO. “This simple-to-use Freeware program allows the direct control, saving and retrieval of those settings for added control where desired.”



Upon opening the software, the main “EVO System Status” window shows a simple “tree” of the EVO system with the speaker configuration and revision of firmware installed in each component. Several parameters are controlled for each individual EVOi.324 loudspeaker: monitoring input levels; checking levels of each discrete amplifier channel (three per speaker); muting of the overall loudspeaker or each individual component; auto set delay times adjustment and level setting for each connected EVO Loudspeaker; and checking the loudspeakers overall “health”. All transducer control parameters can be viewed.

EVO’s Auto EQ can also be viewed and edited. Once the Auto EQ routine has been initiated, the results can be viewed graphically. The software allows editing of the six parametric filters, and the settings may be saved for later use. Text files of the resulting data can be exported for use in other software programs.

EVO DCI offers additional Anti Feedback control. The results of initialing the “Fixed” Anti Feedback application can be viewed. Translating these filter settings to those in the Auto EQ section or applying them to an external parametric equalizer, can free up the six bands of “fixed” Anti Feedback application for rooms that are particularly problematic.

EVO DCI runs on computers with Windows 95, 98, NT4.0 operating systems that have an RS232C Communications port. The computer is connected to EVOi.net utilizing the RS232 port on the front panel of the EVOi.net. An RS232 serial cable (Female DB9- Mini Din 8 Male, similar to a BSS Soundweb cable) is required.

EVO DCI is available free of charge via download JBL Professional’s website. Go to [http://www.jblpro.com/evo1/evo\\_main.htm](http://www.jblpro.com/evo1/evo_main.htm), click on EVO DCI and follow the instructions.

Headquartered in Northridge, California, JBL Professional is the world’s leading designer, manufacturer, and marketer of professional loudspeakers for recording and broadcast, musician, cinema, touring sound, commercial sound and contracting applications. JBL Professional is part of the Harman International network of professional and consumer audio companies. For complete product and company information, go to the JBL Pro website at [www.jblpro.com](http://www.jblpro.com).