

VTX G28

High Performance Dual 18" Subwoofer



Key Features:

- 2269H Differential Drive[®], Dual Neodymium Magnet, Dual Voice Coil, Direct Cooled[™] dual 18" transducers
- Reverse-Cardioid Arrayable with convenient front-facing NL4 connector and OEM factory presets for cardioid operation
- BSS[®] Audio OmniDriveHD V5 Processing for use with Crown Audio I-TechHD or VRack and control via JBL HiQnet Performance Manager[™]
- Companion subwoofer for VTX V20 or VTX V25-II
- Exceptionally high power handling (4000W continuous, 16000W peak AES / 2hr), delivers highest SPL output and LF extension in its class



Description:

The VTX G28 is a full size, high-output, cardioid-arrayable subwoofer designed to deliver maximum acoustic output and impact with the highest possible fidelity for a wide variety of sound reinforcement applications. Built to house two high-performance, road-proven, ultra long excursion JBL 2269H 18" transducers, VTX G28 features a large enclosure volume and a pseudo-vented bandpass alignment with port tuning that delivers true sub performance down to 22 Hz. Inverted woofers (facing outwards) provide improved cooling, increased power handling and reduced power compression. The cabinet is sized for convenient truck packing, transport and stacking, while a front-mounted NL4 connector ground-supported makes cardioid deployment quick and clean. VTX G28 provides a high-impact, ground-stacked subwoofer complement for either VTX V20 or VTX V25-II. For more demanding applications, VTX G28 can be used as part of a 5-way system to complement suspended V25-II and S28 or V20 and S25 configurations. JBL HiQnet Performance Manager[™] control enables fast, accurate system deployment, while BSS[®] Audio OmniDrive HD V5 processing provides consistent, simple integration of VTX G28 in any sound reinforcement system.

Specifications:

System	
Frequency Range (-10 dB):	22 Hz - 160hz
System Input Power Rating ¹ :	2 x 2400 W Continuous, 2x 9600 W Peak (AES / 2 hour)
Bandpass Sensitivity:	101 dB, 1W / 1m (2.0 Vrms at 3.3 ft) half-space conditions
Maximum Peak Output ² :	144 dB SPL half-space conditions
Required Amplification & Processing:	Crown [®] I-TechHD or VRack power amplification JBL HiQnet Performance Manager system control
System Impedance:	LF: 2 x 8 ohms

Transducers	
Low Frequency:	2 x 2269H, 457 mm (18 in) dia., 100 mm (4 in) Dual Coil, neodymium Differential Drive [®] , Direct Cooled [™]
Enclosure	
Construction:	18 mm, 11-ply Finnish birch plywood; black DuraFlex [™] finish; integral recessed handles
Grille:	Powder coated 14 gauge hex-perforation steel with acoustically-transparent black cloth backing
Input Connectors:	Neutrik [®] Speakon [®] NL-4 (2x) and NL-8 (2x) LF1: 1+/-, LF2: 2+/-
Dimensions (H x W x D):	495.3 mm x 1221.7 mm x 1211.58 mm (19.5 in x 48.1 in x 47.7 in)
Net Weight:	92.5 kg (204 lbs)

Footnotes:

1: AES Standard, one decade pink noise with 6 dB crest factor within device's operational band, free air.
2: Calculated maximum SPL based on rated peak power and measured sensitivity

JBL continually engages in research related to product improvement. Some materials, production methods and design refinements are introduced into existing products without notice as a routine expression of that philosophy. For this reason, any current JBL product may differ in some respect from its published description, but will always equal or exceed the original design specifications unless otherwise stated.

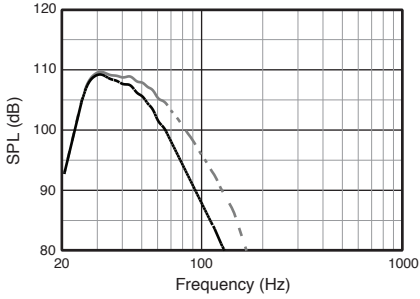
VTX G28

High Performance Dual 18" Subwoofer

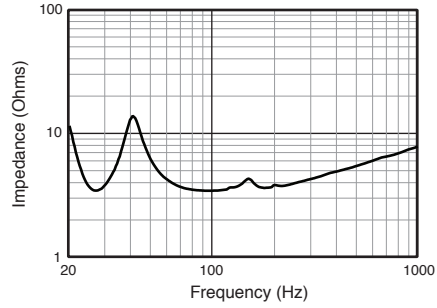


Acoustical Measurements

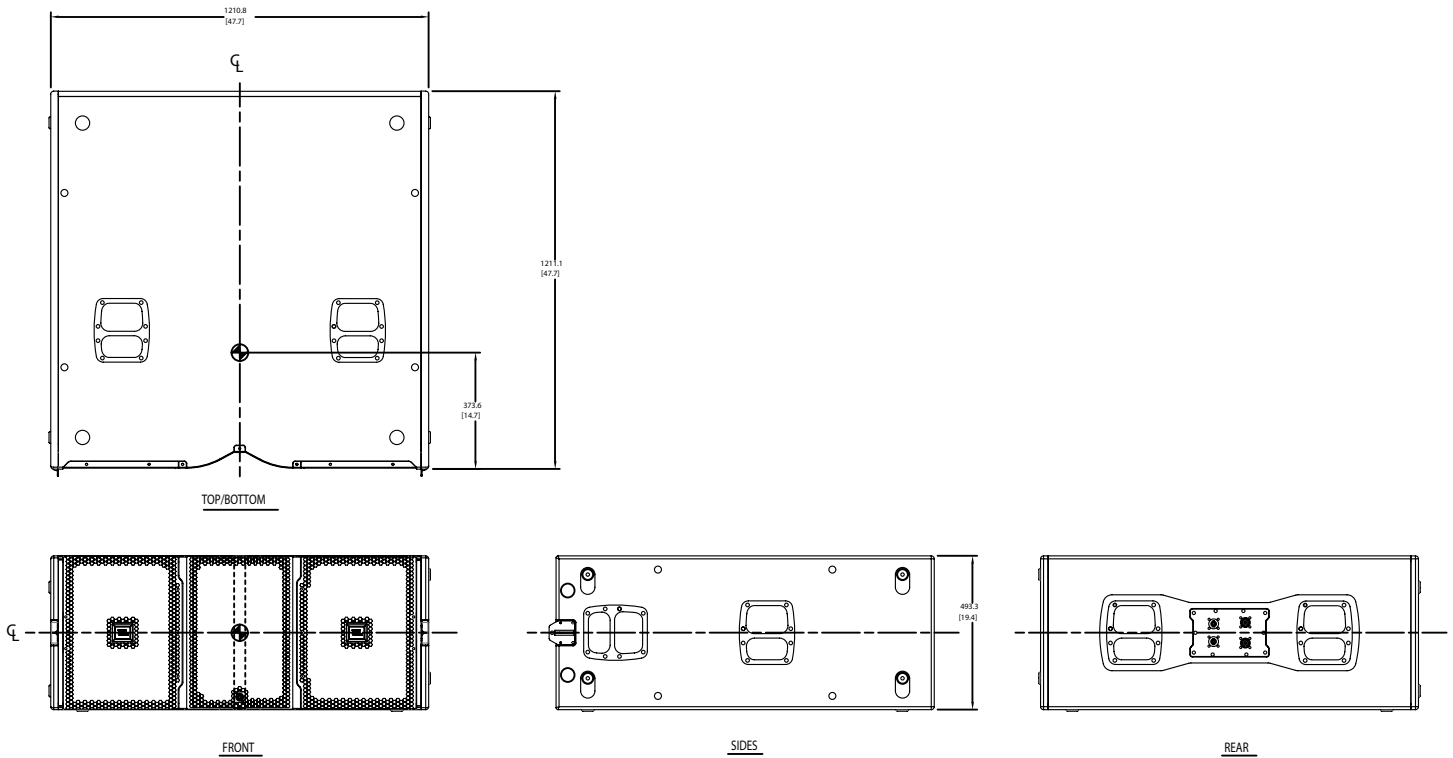
Frequency Response with Recommended Digital Signal Processing
 VTX G28 presets (60 Hz solid, 80 Hz dashed)



System Impedance



Dimensions



Accessories

- VTX-G28-ACC: Protective cover and transport dolly for 1 x VTX G28